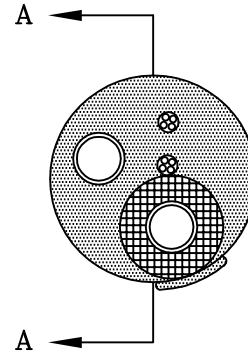


SECTION A-A



1. Wall assembly

1A. Min. 4-1/2 in. thick NW or LW concrete or block wall capable of a 2 hr. rating. Max. 4 in. diameter penetrant opening.

2. Penetrant

2A. Up to two max. 1 in. diameter steel or copper pipe or tubing. Both of the pipes or tubing may have a max. 3/4 in. AB/PVC insulation.

2B. Up to two of the following in any combination:

- I. Max. 7/C No. 24 AWG (or smaller) cable with PVC jacket and insulation.
- II. Max. 2/C No. 10 AWG (or smaller) wire.

Annular space – Min. 0 in. (point of contact) to max. 1-1/4 in. between each penetrant and min. 0 in. to max. 2-1/4 in. between penetrants and edge of opening. Cables and non-insulated pipe or tubing must be separated by min. 1/2 in.

3. Firestopping – FlameSafe® FS 1900 Series Sealant.  
FlameSafe® FS 900+ Series Sealant.

3A. Mineral wool (4 pcf) compressed into annular space to a min. thickness of 3 in. Recess a min. 1/2 in. from wall surface (both sides).

3B. At wall surface, apply FS 1900 or FS 900+ into annular space to a min. 1/2 in. depth and finish flush with wall surface (both sides). Add a min. 1/2 in. bead of sealant to any point of contact at edge of opening.

**NOTES**

1. This system drawing is provided to aid in the installation and selection of the UL listed design. The user shall refer back to the UL listed design for complete information required for submittal and approval purposes.
2. System design evaluated to the UL 1479 (ASTM E814) Fire Tests of Through-Penetration Firestops.
3. Please refer to the UL Fire Resistance Directory for components requiring UL classification.

**Flamesafe® Firestopping Products**

|  |            |
|--|------------|
| Firestop Assembly  | Project:   |
| Product: FlameSafe FS 1900 Series Sealant or<br>FlameSafe FS 900+ Series Sealant | Installer: |
| F Rating: 2 HOUR   | Approval:  |
| UL System: CAJ8161   | Date:      |
| RS Dwg # CAJ8161-W   | Rev.# 000  |

**Rectorseal**  
2601 Spenwick  
Houston, Tx 77055  
Phone: 713-263-8001 or 800-231-3345  
Fax: 713-263-7577 or 800-441-0051  
E-mail: techservice@rectorseal.com

The information here is based on testing performed by nationally recognized testing laboratories, but we do not warrant the results to be obtained. Please read all statements, recommendations or suggestions in conjunction with our Conditions of Sale which apply to all goods supplied by us. No statement, recommendation or suggestion is intended for any use which would infringe any patent or copyright.